



SUBJECT

Caution, when mounting a HBU 1 bearing with different seals

PRODUCTS DESIGNATIONS

VKBA 6799

CAR MANUFACTURERS - BRANDS



DACIA: DOKKER Box Body/MPV, DUSTER (HM_HS_), LODGY (JS_), LPGAN II, LOGAN MCV, LOGAN MCV II, LOGAN Pickup, SANDERO II

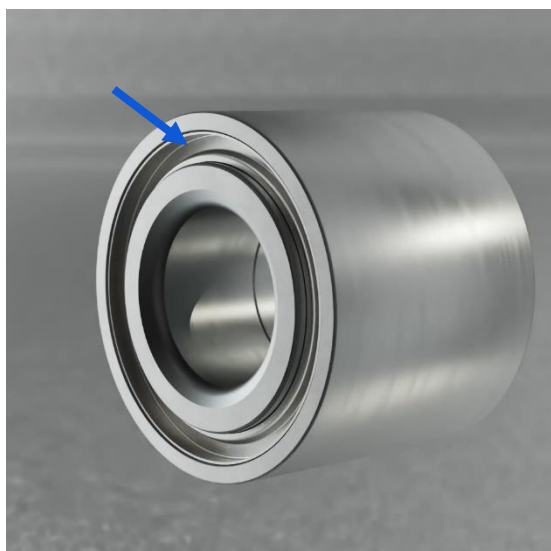
RENAULT: ARKANA I, CAPTUR I, CLIO IV/ ESTATE VAN/GRANDTOUR, DOKKER, DUSTER, EXPRESS BOX BODY/MPV, KANGOO/ GRAND KANGOO II, LOGAN II ESTATELOGAN/STEPWAY II, ZOE/ HATCHBACK VAN



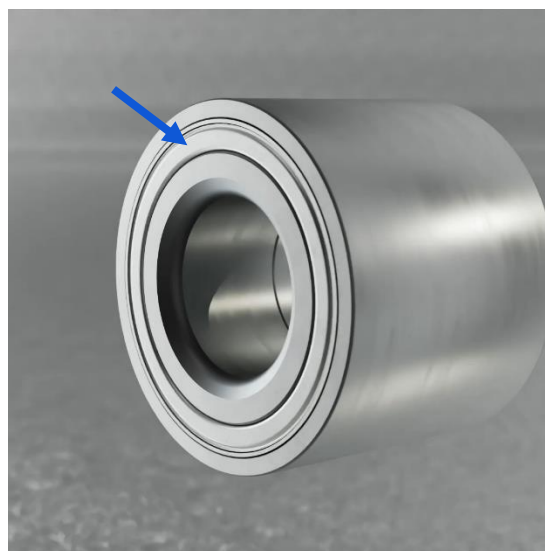
SKF Kit	OE number (equivalency)
VKBA 6799	43 00 097 07R, 43 21 020 69R, 43 21 064 34R, 82 00 639 543, 43 21 031 06R

SKF has several HBU 1 bearings containing a flat metal shield with an integrated rubber seal to be mounted on the inboard side and a double bended metal shield placed on the outboard side.

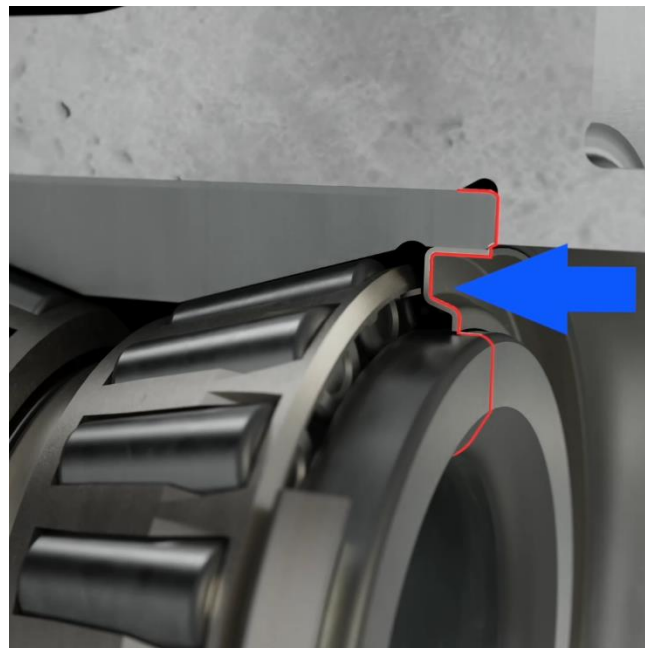
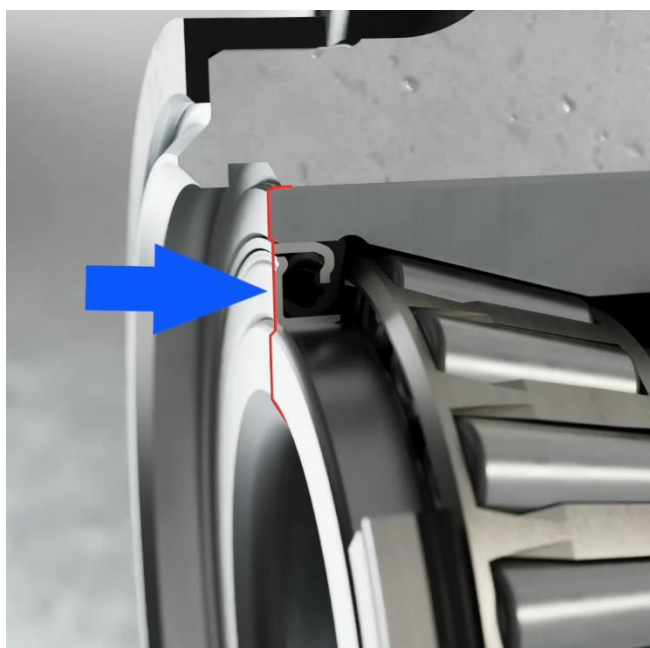
Note: If not mounted this way, you will decrease the lifetime of the bearing.



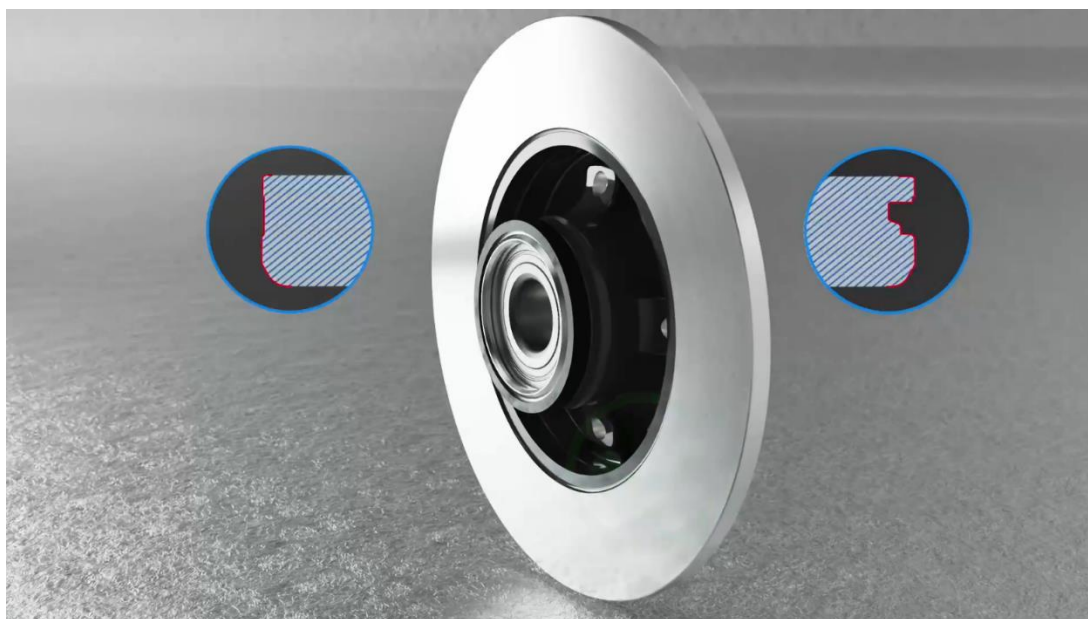
Double bended metal shield –
outboard side



Metal shield with integrated
rubber seal – inboard side



When installing the bearing, always ensure that the flat seal of the wheel bearing is facing inwards (towards the vehicle) and that the seal with the groove is facing outwards (towards the wheel).
Note: Always follow the installation instructions provided by the vehicle manufacturer.

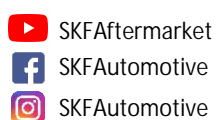


Scan for
mounting video



Scan the QR code or visit
vehicleaftermarket.skf.com
to know more premium
SKF products

Follow us on Social Media



Contact SKF Technical Support
to help resolve your
automotive problems and
answer your questions:
helpline@skf.com

SKF®