

# Service-Information

## VERWENDUNG UND MONTAGEHINWEIS 13.0460-5775.2 HYUNDAI I10 / KIA PICANTO

Info-Nummer:

100.022

Von:

APPM / TF / DF

Datum:

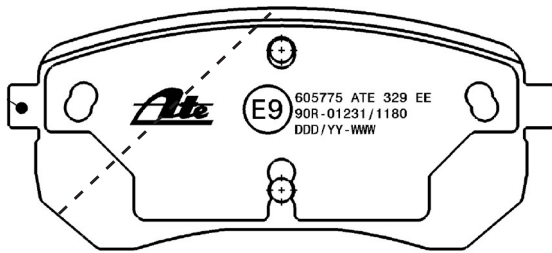
20.02.2014

Information für:

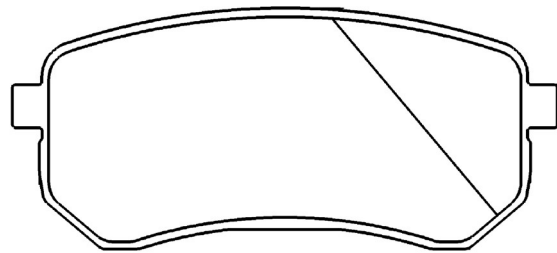
- Alle
- Extern (Werkstatt)
- ATE Bremscenter
- Intern

Art der Information:

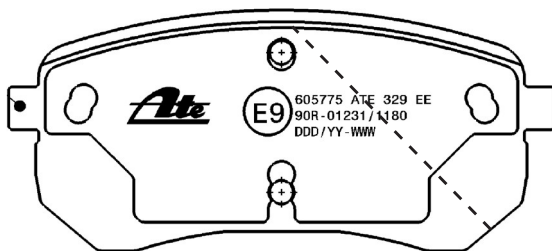
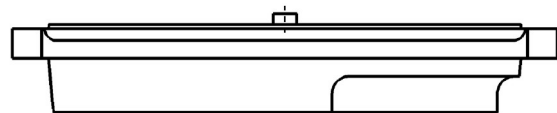
- Montage- Bedienungsanleitung
- Handbuch
- Datenblatt / Spezifikation
- Software Updates & Upgrades



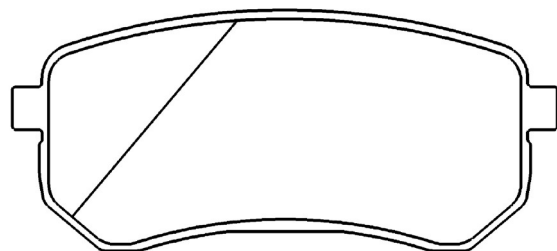
HA Rechts Faustseitig



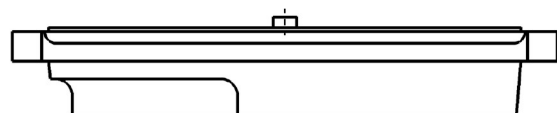
HA Links Kolbenseitig



HA Links Faustseitig



HA Rechts Kolbenseitig



# Service-Information

SI 100.022

## Fahrzeugverwendungen

FZG Typ	KW	Bj. von	Bj. bis	Bemerkung
---------	----	---------	---------	-----------

### HYUNDAI i10 (08-)

OE.Nr.: 58302-0XA00

1,0 12V	51	01.2011		
1,1 12V	48	01.2008		
1,1 12V	49	01.2008		
1,1 12V	51	04.2011		
1,1 LPG	51	04.2011		
1,1 CRDi	55	01.2008		
1,2 12V	57	11.2008		
1,2 16V	59	01.2008		
1,2 16V	63	01.2011		

### KIA PICANTO (BA) (04-11)

OE.Nr.: 58302-07A10

1,0	45	09.2005	04.2011	+ ABS
1,0	46	11.2009	04.2011	+ ABS
1,1	48	04.2004	04.2011	+ ABS
1,1 CRDi	55	11.2005	04.2011	+ ABS

### KIA PICANTO (TA) (11-)

OE.Nr.: 58302-07A00; 58302-07A10

1,0 12V	51	05.2011		
1,0 Bi-Fuel	59	05.2011		
1,0 Bi-Fuel	60	05.2011		
1,2 16V	63	05.2011		