



## Service Info



# LuK Double Disc Clutches

## Transport damage due to incorrect handling

### Vehicle

manufacturer: Mercedes Benz  
Volvo

### Models:

Mercedes Benz: Actros  
Actros MP 2/3  
Axor  
Axor 2

### Volvo:

FH, FH II, FH 12, FH 16  
FM, FM 12  
FMX, FMX II W

Article numbers: 640 3006 18  
640 3027 18

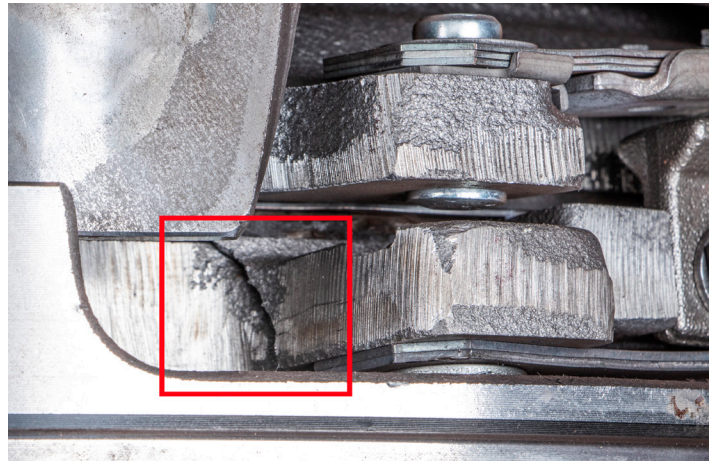


Image 1: Cam break at the fixture of the tangential leaf spring

Continuous quality testing and experience from the market indicate that double disc clutches are often damaged during transportation due to incorrect handling.

The main cause of this damage is lateral impact loads that result from improper loading methods or inadequate securing of the load.

In most cases, these impact loads cause cam breaks at the fixtures of the tangential leaf springs (Fig. 1), which then lead to problems disconnecting the clutch. Furthermore, fragments of the cam or parts of the tangential leaf spring can suddenly work loose even at low speeds and cause serious damage to the bell housing. For this reason, a damaged pressure plate must not be installed under any circumstances because very high consequential costs can be expected.

In such cases, note the following points:

- The condition of the clutch packaging on arrival must be more or less damage free. If the packaging has been damaged during transportation, conduct a detailed visual inspection on the clutch to check for the damage mentioned above
- Any impact loads on the clutch, especially lateral impact loads, must be prevented
- As the clutch is relatively heavy, it is worth using a suitable lifting device to handle the component

Please observe the vehicle manufacturer specifications!

### You want more? We can help!

Phone: +44 (0) 1432 264 264  
Fax: +44 (0) 1432 375 760  
aftermarket.uk@schaeffler.com  
www.repxpert.co.uk



SCHAEFFLER

REP>XPERT