

AXLE STRUT OPEL VECTRA REAR AXLE

TECHNICAL INFO NO. 1057

VEHICLE MANUFACTURER / MODEL:

Opel	Vectra B
Vauxhall	Vectra MKI

AFFECTED ARTICLES:

RUVILLE No.:	OE No.:
935319	464023
915300	423121

NB!

When changing the cross strut, always also replace the rod end. Please comply with the instructions issued by the vehicle manufacturer!

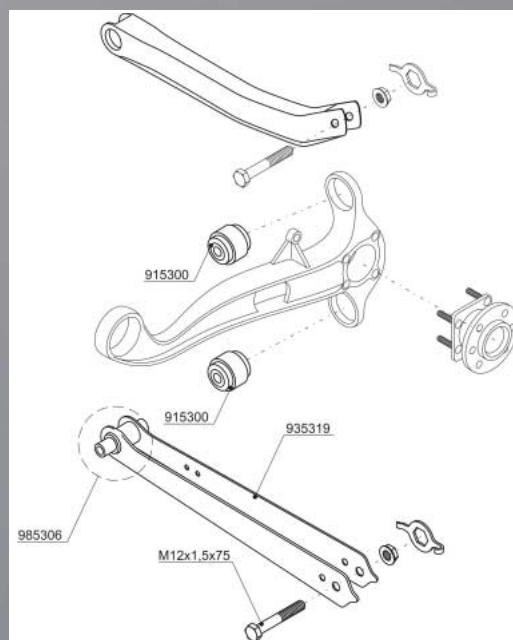


Fig. 1: Axle strut Opel Vectra rear axle

Cracks and fractures frequently cause failure of the lower rear axle strut in the Opel Vectra B. This is usually the result of corrosion in the struts, combined with stiff or seized rod ends on the wheel side.

Repairs that replace just the struts without the rod ends fail to eliminate the cause; this may possibly lead to renewed premature failure of the new struts with the same fault symptoms.

For this reason, it is vital for the rod end of the strut (RUVILLE Article 915300) to be replaced as well when changing the axle struts. The other rod end fitted to the wheel should also be checked to see whether it moves smoothly, and also replaced if necessary.

For further assistance in counteracting the corrosion problem, in contrast to the general market standard RUVILLE offers the struts in top quality zinc plating.



INFORMATION

Corresponding spare parts can be found in our online catalogue at www.ruville.de

Where reference is made to the spare parts numbers of the vehicle manufacturers, this is only for the purposes of comparison.

EGON VON RUVILLE GMBH

Billbrookdeich 112 • 22113 Hamburg • Germany

Phone: +49 (0)40 73344-0 • Fax: +49 (0)40 73344-199

info@ruville.de • www.ruville.de

RUVILLE
YOUR PARTNER