

STABILISER STRUT 925500 WITH EXTRA ADAPTER WASHER

TECHNICAL INFO NO. 1121

VEHICLE MANUFACTURER / MODELS:

Renault | Twingo II (CN 0...)

APPLIES TO ENGINES:

D4F, D7F, K9K

APPLIES TO PART NO.:

RUVILLE-No.	OE-No.
925500	8200603492
	8200891487

IMPORTANT NOTE!

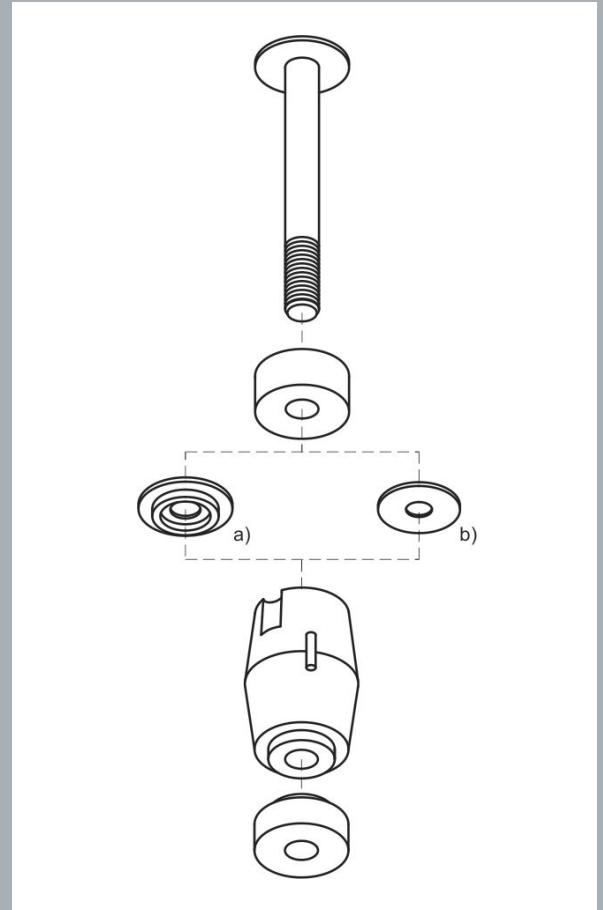
When exchanging the stabiliser struts, the joints/bushes of the wheel suspension should also be checked.

Observe all information provided by the manufacturer!

Please refer to the usual media to establish the exact vehicle assignment e.g. TECDOC, online catalogue etc.

In contrast to the OE delivery scope, RUVILLE now supplies the stabiliser strut 925500 with an extra blue adapter washer.

Reason: The transverse link in the Renault Twingo II may be equipped with a borehole diameter of 16mm or 18mm for the stabiliser strut depending on the construction year. The extra blue adapter washer allows the stabiliser strut 925500 to be used for both transverse link models.



ASSEMBLY INFORMATIONS:

- Measure the boreholes for the stabiliser strut on the mounted transverse link.
den montierten Querlenkern ausmessen.
- Only use the white washer (b) for a diameter of 16mm.
- Only use the blue washer (a) for a diameter of 18mm.



INFORMATION

Corresponding spare parts can be found in our online catalogue at www.ruville.de. Where reference is made to the spare parts numbers of the vehicle manufacturers, this is only for the purposes of comparison.