

IDENTIFICATION OF LEFT / RIGHT MOUNTING KITS *

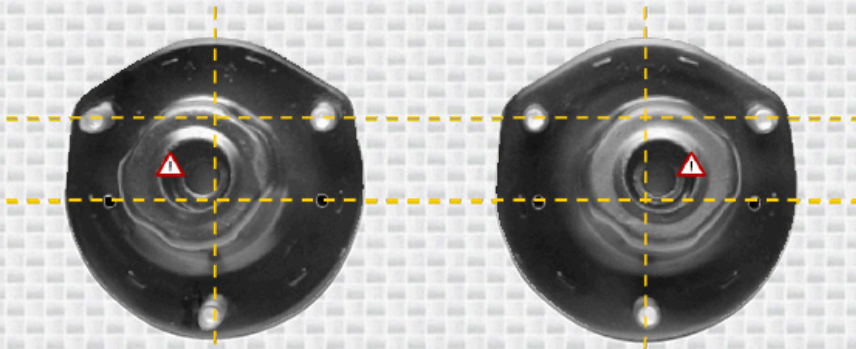
Strut-Mate Mounting Kit Toyota MK168



FI107EU

Old part number: **MK168**

New part numbers: **MK168R + MK169L**



MK169L
(Left)

MK168R
(Right)



Main visual identification points**

- Position of pins or holes
- Position of text- or other marks
- Angle of the strut mount
- Eccentric position of the center hole
- External shape

* Only the asymmetrical parts of the Mounting Kits are shown.

** Additional identification points may be available but not shown.