



FAG

Service Info



Visual differences - ABS sensor rings

Take note of different wheel hub designs

Manufacturer: DAF

Part No. RIU
(Repair Insert Unit): 566283.01.H195

Part No. ABS sensor rings: 434 0579 10
434 0580 10

With DAF, two different wheel hubs are used where the wheel bearing unit (RIU) with Part No. 566283.01.H195 can be installed.

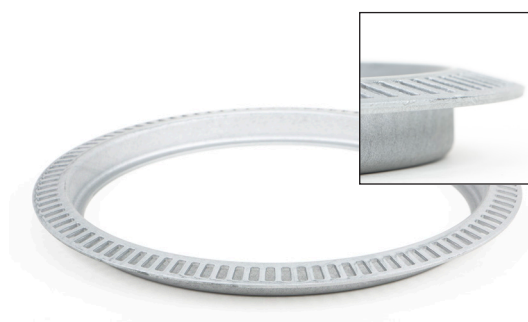
The two different wheel hubs use different ABS sensor rings, however. When replacing the ABS sensor ring, it is important to identify the visual differences in order to assign the correct ring to the correct hub.



Part No. 434 0579 10 fits the wheel hub of the new design

The following table lists the identifying features of the two ABS sensor rings:

Wheel hub	Part No. RIU (Repair Insert Unit)	DAF Part No. ABS-ring	FAG Part No. ABS-ring
old design	566283.01.H195	1805823	434 0580 10
new design	566283.01.H195	1805824	434 0579 10



The ABS ring with Part No. 434 0580 10 fits wheel hubs of the old design

Please observe the vehicle manufacturer specifications!

You want more? We can help!

Phone: +44 (0) 1432 264 264*

Fax: +44 (0) 1432 375 760

hfd-info@schaeffler.com

www.schaeffler-aftermarket.co.uk

* Calls from within the UK 08457 001100



SCHAEFFLER

REP>XPERT