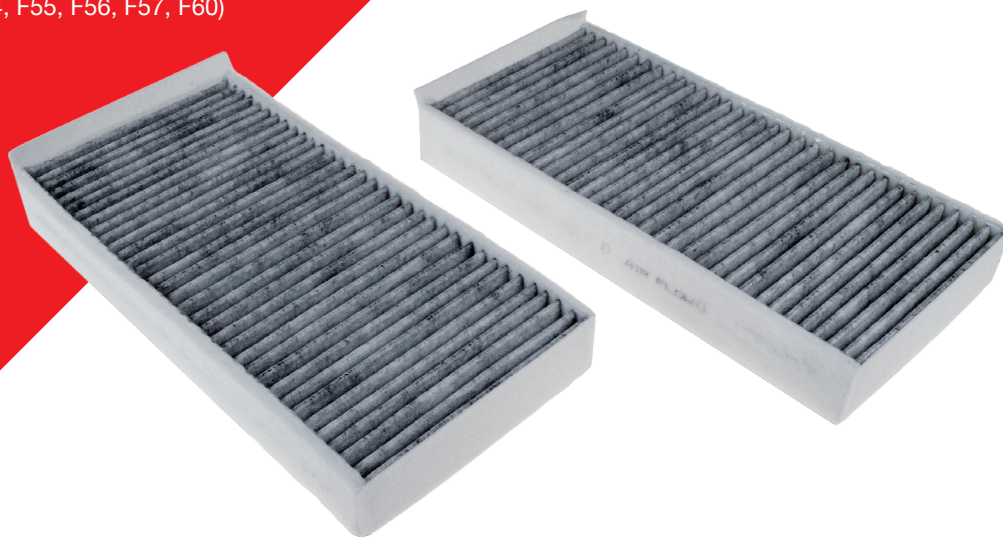


febi 45865, 45881



To fit:

BMW 1 Series (F40), 2 Series (F44, F45, F46), X1 (F48), X3 (F39). MINI (F54, F55, F56, F57, F60)



EN

Cabin Filter Set

Problem

Front footwell carpets are wet. On removal of the cabin filter during routine maintenance it is found to be moist and has started to become moldy, causing odour within the car.

Cause

The heater housing evaporator drain is blocked or excessive leaf litter within or near the heater intake is causing an obstruction. Another possible cause is that the air conditioning housing access cover - located next to the cabin filter service cover - is incorrectly fitted and allowing condensation to leak into the vehicle's interior.

Solution

Remove any leaf litter from the heater intake and check and clear the heater housing drain tube. Take off the air conditioning evaporator housing access cover and check that the mating surfaces will provide a good seal. Refit and apply pressure while tightening the retaining screws.

For vehicles equipped with climate control, replace the cabin filter with febi part 45865 (activated charcoal filter). For vehicles without climate control use febi part 45881.

febi cabin filters 45865 and 45881 are made to OE-matching quality. From February 2016 the vehicle manufacturer removed spacers on the edge of the filter and naturally febi follows this change in the OE design.

For more technical information please visit: partsfinder.bilsteingroup.com