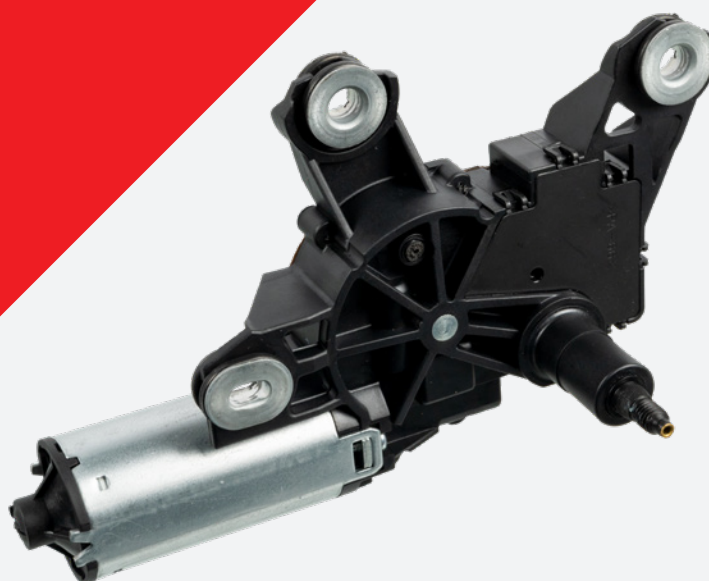


**To fit:**

Audi A4, S4, RS4 (8K) Avant



EN

## Rear wiper motor

**Problem**

Rear wiper not parking, rear washer not working, and brown water stains appear on the tailgate-opening area.

Washer fluid leaks from the wiper motor, causing water to enter the spare wheel/battery area. If this is left untreated for a long period, it could cause many different 'warning lamps' to illuminate on the instrument panel.

**Cause**

There is a blocked rear-washer nozzle or pipe. The washer fluid leaks internally into the wiper motor, corroding the internals of the motor mechanism. (Fig.1) Excess fluid leaks from the damaged wiper motor into the spare wheel area, affecting the battery and battery-control module and potentially causing multiple voltage-related faults with other control units.

**Solution**

Check and clean any excess water from the spare wheel area. Remove the rear wiper arm-cap, clean and check the washer nozzle for blockages, remove the rear wiper arm and remove the tailgate's inner-trim panel. Disconnect the washer fluid pipe and test its operation to check for blockages. Once satisfied that the rear-washer system is operating correctly, replace the rear wiper motor and clean any brown water stains from the affected trim and metal surfaces. Refit all other parts and test the rear wiper and washer operation.

Check the operation of any control modules that could have been affected by any water ingress and repair/replace as necessary.



Figure 1

For more technical information please visit: [partsfinder.bilsteingroup.com](http://partsfinder.bilsteingroup.com)