



Service Info



Visual differences

to deflection pulley 532 0160 10

Manufacturer: Audi, BMW, Chrysler, Dodge, Jeep, Mercedes-Benz, Puch, Skoda, VW

Models:

Audi: A4, A5, A6, A7, A8, Allroad, Q5, Q7

BMW: 316i, 318i

Chrysler: Crossfire

Dodge: Challenger, RAM

Jeep: Grand Cherokee III, Grand Cherokee IV

Mercedes: C-Klasse, E-Klasse, G-Klasse, M-Klasse, R-Klasse, S-Klasse, V-Klasse, CLK, CLS, SL, SLK, Sprinter, Vito, Viano

Puch: G-Modell

Skoda: Superb

VW: Passat, Phaeton, Touareg

Part no.: 532 0160 10

OE number:

BMW: 11 28 7 511 474

Chrysler: 04593985AA, 68020888AA

Mercedes: 000 202 00 19, 00202 09 19

VAG: 059 903 341 A/E/J

For the above-mentioned vehicles, there are two different deflection pulleys with part no. 532 0160 10.

Both deflection pulleys differ only in terms of visual appearance or in the contents and can be used without limitation.

The main distinguishing feature is the front cover and the additional washer for the version in Image 2. In order to align the V-ribbed belt, the enclosed washer must be fitted between the engine block and the deflection pulley.



Image 1: Version 1

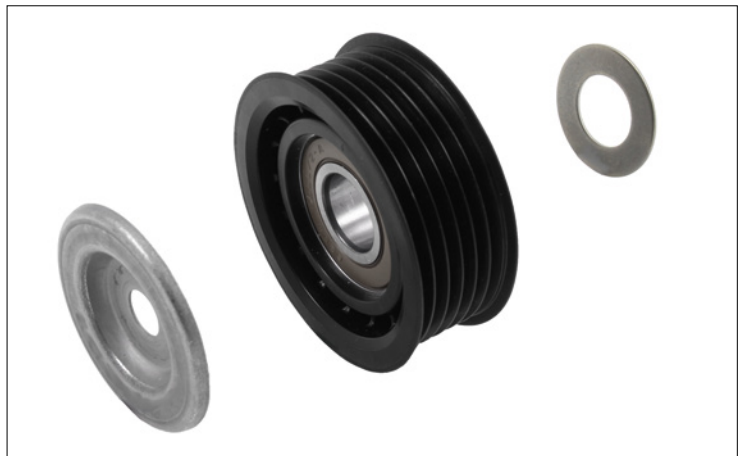


Image 2: Version 2

Observe the specifications of the vehicle manufacturer!

Spare parts and technical information can be found under www.schaeffler-aftermarket.com or www.RepXpert.com.

Phone: +44 (0) 14 32 264 264*

Fax: +44 (0) 14 32 375 760

hfd-info@schaeffler.com

www.schaeffler-aftermarket.com

* Calls from within the UK 08457 001100

SCHAEFFLER
AUTOMOTIVE AFTERMARKET

