



## Service Info



# Tensioning arm 534 0610 10 replaces 534 0241 10

## Visual differences

Manufacturer: Alfa, Cadillac, Fiat, Lancia, Opel, Saab, Suzuki, Vauxhall

### Models:

Alfa: Brera, Giulietta, Mito, Spider, 159  
 Cadillac: BLS  
 Fiat: Bravo, Croma, Doblo, Ducato, Freemont, Punto, Linea, Sedici, Stilo  
 Lancia: Delta, Musa  
 Opel/Vauxhall: Astra, Combo, Signum, Vectra, Zafira  
 Saab: 9-3, 9-5  
 Suzuki: SX4

Engines: 1.6, 1.7, 1.9, 2.0

Part no.: 534 0241 10 (replaced)  
 534 0610 10 (new)

For current listing refer to catalogue media



Figure 1: Old design

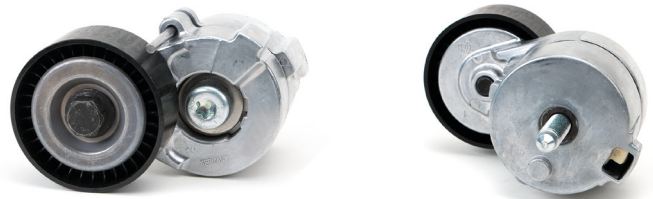


Figure 2: New design

As a result of continuous development of our products, the tensioning arm of the auxiliary system drive has been optimized for the engines listed. For this reason, the previous tensioning arm 534 0241 10 has been replaced by part no. 534 0610 10.

The pictures show the visual differences between the previous design and the new one.

The two designs differ in appearance only. They both meet the technical specifications and can be used without restriction.

Please observe the vehicle manufacturer specifications!

### You want more? We can help!

Phone: +44 (0) 1432 264 264\*

Fax: +44 (0) 1432 375 760

[hfd-info@schaeffler.com](mailto:hfd-info@schaeffler.com)

[www.schaeffler-aftermarket.co.uk](http://www.schaeffler-aftermarket.co.uk)

\* Calls from within the UK 08457 001100



SCHAEFFLER

REP>XPERT