

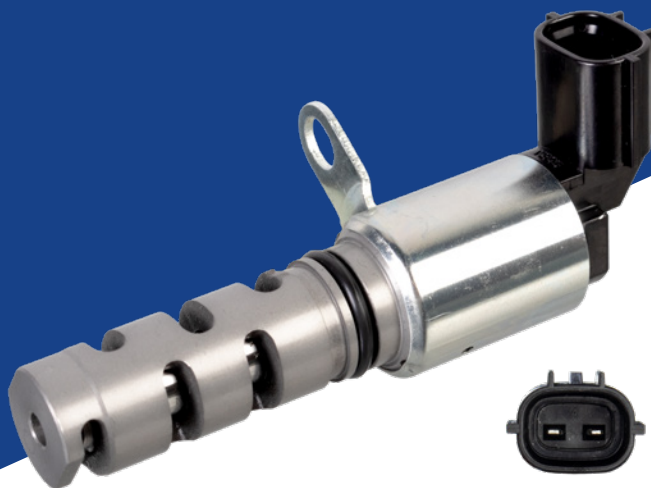
# Blue Print ADBP740024



To fit:

Various Hyundai, Kia models

Engine: 2.0, 2.4 Petrol. G4KA, G4KC, G4KD, G4KE, G4KF, G4KH, G4KJ



EN

## Camshaft Adjustment Solenoid Valve

### Problem

An illuminated engine warning lamp, rough engine idle, lack of power, misfire and poor fuel economy are symptoms of a faulty camshaft adjustment solenoid valve.

Possible fault code stored in the engine control unit:

P0014 Camshaft position actuator, exhaust/right/rear, bank 1. Timing over - advanced/system performance.

### Cause

The camshaft adjustment solenoid valve requires good engine oil pressure to operate. If the engine oil level is low or the oil is of a poor quality due to infrequent servicing, this can have a negative effect on the engine's performance. A common cause for the failure of the camshaft adjustment solenoid valve is dirty oil or metal debris restricting the operation of the valve. This can stop the valve fully opening or closing, causing a high load on the electrical solenoid - leading to failure.

### Solution

Remove the camshaft adjustment solenoid valve from the cylinder head. Check that the camshaft adjustment solenoid valve is operating by attaching a 12-volt power supply and ground to the two separate terminals. Note: Be careful to avoid a short circuit when providing the valve with a power supply. The spacing between the power and ground terminals is very narrow.

If there is no movement, replace the camshaft adjustment solenoid valve. Note: do not apply 12 volts for longer than 5 seconds when testing. This is to prevent the windings of the solenoid valve overheating.

If a replacement camshaft adjustment solenoid valve is required, it is recommended that the engine oil and filter is replaced.

For more technical information please visit: [partsfinder.bilsteingroup.com](https://partsfinder.bilsteingroup.com)