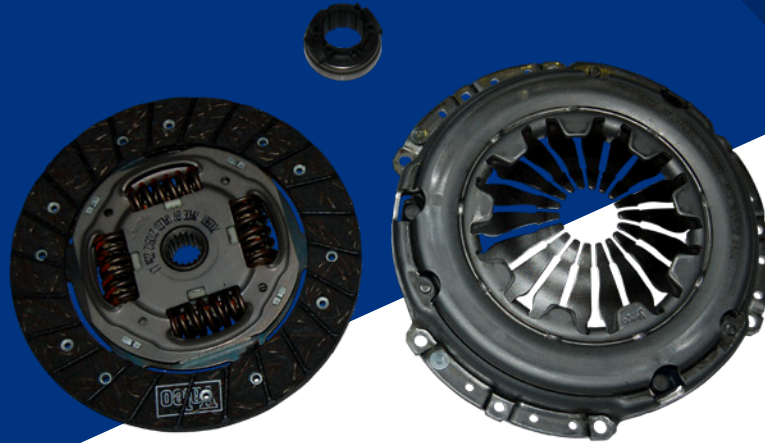


Blue Print ADG030148, ADG030149, ADG030150

to fit:
BMW MINI 1.4DT/1.6i 2001>2006i



EN

BMW MINI CLUTCH KIT REPLACEMENT

We have had reports of clearance and gear selection problems for the BMW MINI 1.4DT/1.6i 2001-2006. Repairers understandably assume that the clutch is at fault and fit a new clutch kit; however this does not always rectify the problem.

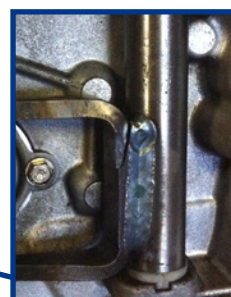
We have found that the cause of the problem can lie with a fracture in the weld of the clutch fork, allowing the fork to flex during operation which prevents the clutch from fully engaging. The symptoms are a dragging clutch, difficult gear selection and clutch judder.

It is imperative that the clutch fork is cleaned and thoroughly checked for fatigue/damage during normal clutch replacement. Good practice would be to recommend fitting a new fork at the same time as the clutch, as fork failure is a known issue with the MINI. With a repair time of 6.5 hours, this is one job that you wouldn't want to do twice on the same vehicle.

Failure to identify and replace a faulty fork could cause clearance problems and difficulty in selecting gears. This would not be covered under the Blue Print warranty agreement.

At the time of writing, the fork is only available from BMW.

Blue Print also recommends that the fork pivot bushes and locking pin are renewed at the same time.



CLUTCH FORK FRACTURE

For more technical information please visit: partsfinder.bilsteingroup.com