

Blue Print ADT391100



To fit:

- Citroen C1 1.0 (ref. no. 1201.L3, 1201.J0)
- Daihatsu Cuore VII 1.0 / Sirion 1.0 (ref. no. 16100-80001)
- Peugeot 107 1.0 (ref. no. 1201.L3, 1201.J0)
- Subaru Justy 1.0 (ref. no. 16100-80003)
- Toyota Aygo 1.0 / Yaris 1.0 (ref. no. 16100-09530)



EN

Water pump

Problem

The water pump leaks.

Cause

The water pump fitted by the vehicle manufacturer can leak, because the material used is perforated steel sheet. In the worst case, this can lead to significant engine damage.

Solution

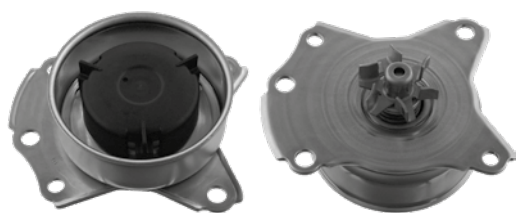
Blue Print recommends using water pump Blue Print no. ADT391100. This modified version of the water pump is manufactured from aluminium die casting. This makes the pump significantly stronger, and prevents leakage. Additionally, Blue Print supplies water pump ADT391100 including the required gasket and suitable bolt set.

Fitting Tip

When fitting the new version Blue Print ADT391100, please use bolts supplied with water pump. Torque setting for bolts is 28nM. The vehicle manufacturer's specifications should always be followed!

Attention

Both old and new versions are still available in the aftermarket; however the new version does not contain the required bolts!



OLD



NEW

For more technical information please visit: partsfinder.bilsteingroup.com