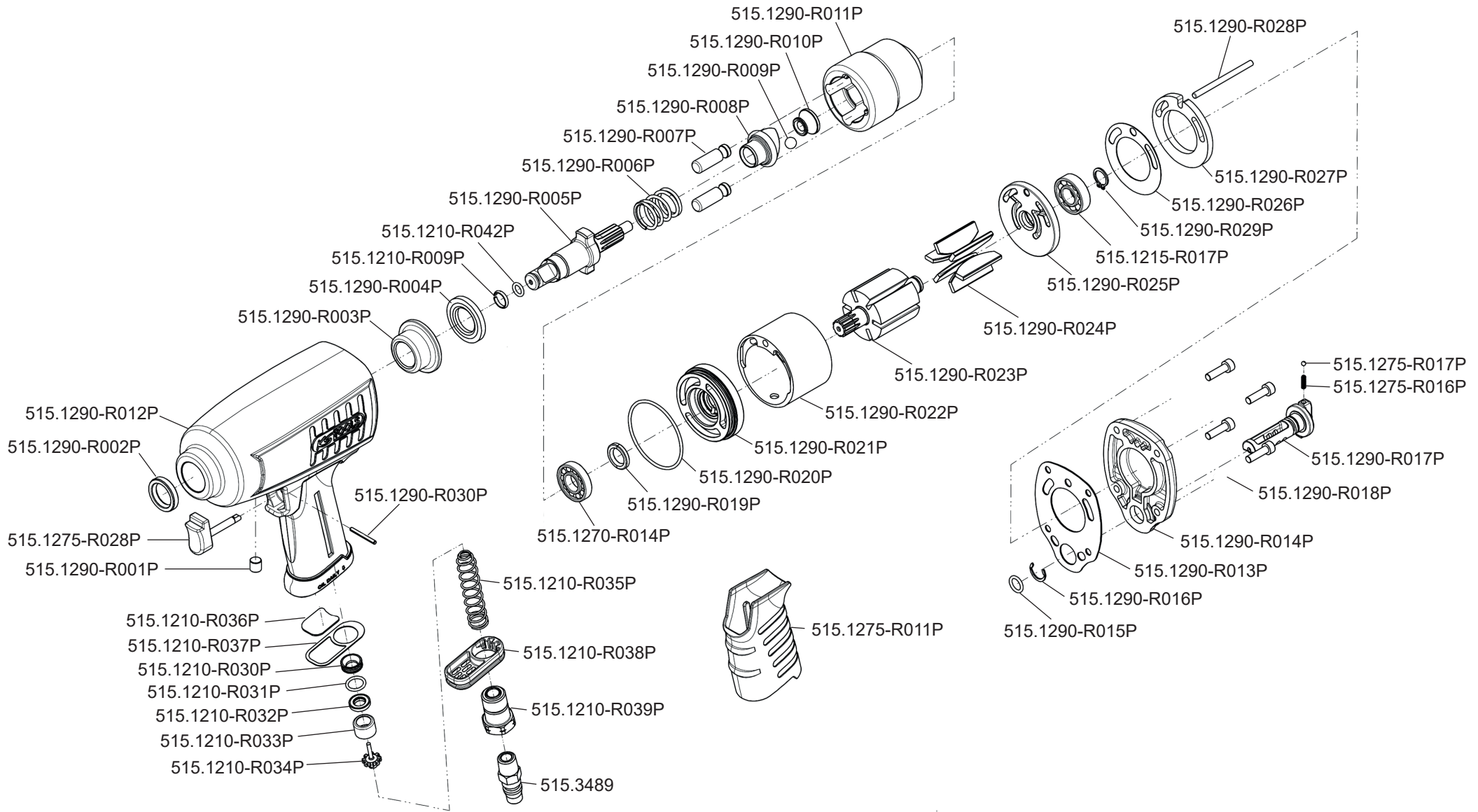


Art. 515.1290



**Art. 515.1290**

Art.-Nr.	Description	Beschreibung	Menge Qty.
515.1210-R030P	insert bushing	Distanzhülse	1
515.1210-R031P	o - ring	Dichtungsring	1
515.1210-R032P	seal	Dichtungsring	1
515.1210-R033P	bushing	Hülse	1
515.1210-R034P	tip valve	Druckventil	1
515.1210-R035P	valve spring	Ventilfeder	1
515.1210-R036P	muffler	Abluftdämpfer	1
515.1210-R037P	gasket	Abluftdichtung	1
515.1210-R038P	deflector	Abluft-Ableiterplatte	1
515.1210-R039P	air inlet	Lufteinlassschraube	1
515.1215-R017P	bearing	Kugellager	1
515.1270-R014P	bearing	Lager	2
515.1275-R011P	handle grip	Griff	1
515.1275-R016P	spring	Feder	1
515.1275-R017P	steel ball	Stahlkugel	1
515.1275-R028P	trigger unit	Schalter	1
515.1290-R001P	hex soc hd bolt	Innen6kant Schraube	1
515.1290-R002P	oil seal	Öldichtung	1
515.1290-R003P	hammer case bushing	Führungsbuchse	1
515.1290-R004P	washer	Dichtung	1
515.1290-R005P	anvil	Amboss	1
515.1290-R006P	spring	Feder	1
515.1290-R007P	hammer cage pin	Pin für Hammergehäuse	2
515.1290-R008P	hammer cam	Amboss Exzenter	1

Art.-Nr.	Description	Beschreibung	Menge Qty.
515.1290-R009P	ball	Kugel	1
515.1290-R010P	cam pilot	Führungszapfen	1
515.1290-R011P	hammer frame	Hammergehäuse	1
515.1290-R012P	housing	Gehäuse	1
515.1290-R013P	housing gasket	Gehäusedichtung	1
515.1290-R014P	rear cover	Hintere Abdeckung	1
515.1290-R015P	o - ring	O-Ring	1
515.1290-R016P	ctw - ring	Seegering	1
515.1290-R017P	reverse valve	Regler	1
515.1290-R018P	bolt assy	Bolzen	4
515.1290-R019P	oil seal	Dichtungsring	1
515.1290-R020P	o - ring	O-Ring	1
515.1290-R021P	front bearing plate	Vordere Kugellageraufnahme	1
515.1290-R022P	cylinder	Zylinder	1
515.1290-R023P	rotor	Rotor	1
515.1290-R024P	blade	Rotorblatt	6
515.1290-R025P	rear bearing plate	Hintere Kugellageraufnahme	1
515.1290-R026P	gasket	Dichtung	1
515.1290-R027P	spacer ring	Distanzring	1
515.1290-R028P	pin	Pin	1
515.1290-R029P	s - ring	Federring	1
515.1290-R030P	spring pin	Splint	1
515.3489	Air inlet connector,male thread, 1/4"	Messing-Stecknippel m.Au-ßengew.10x13mm	1