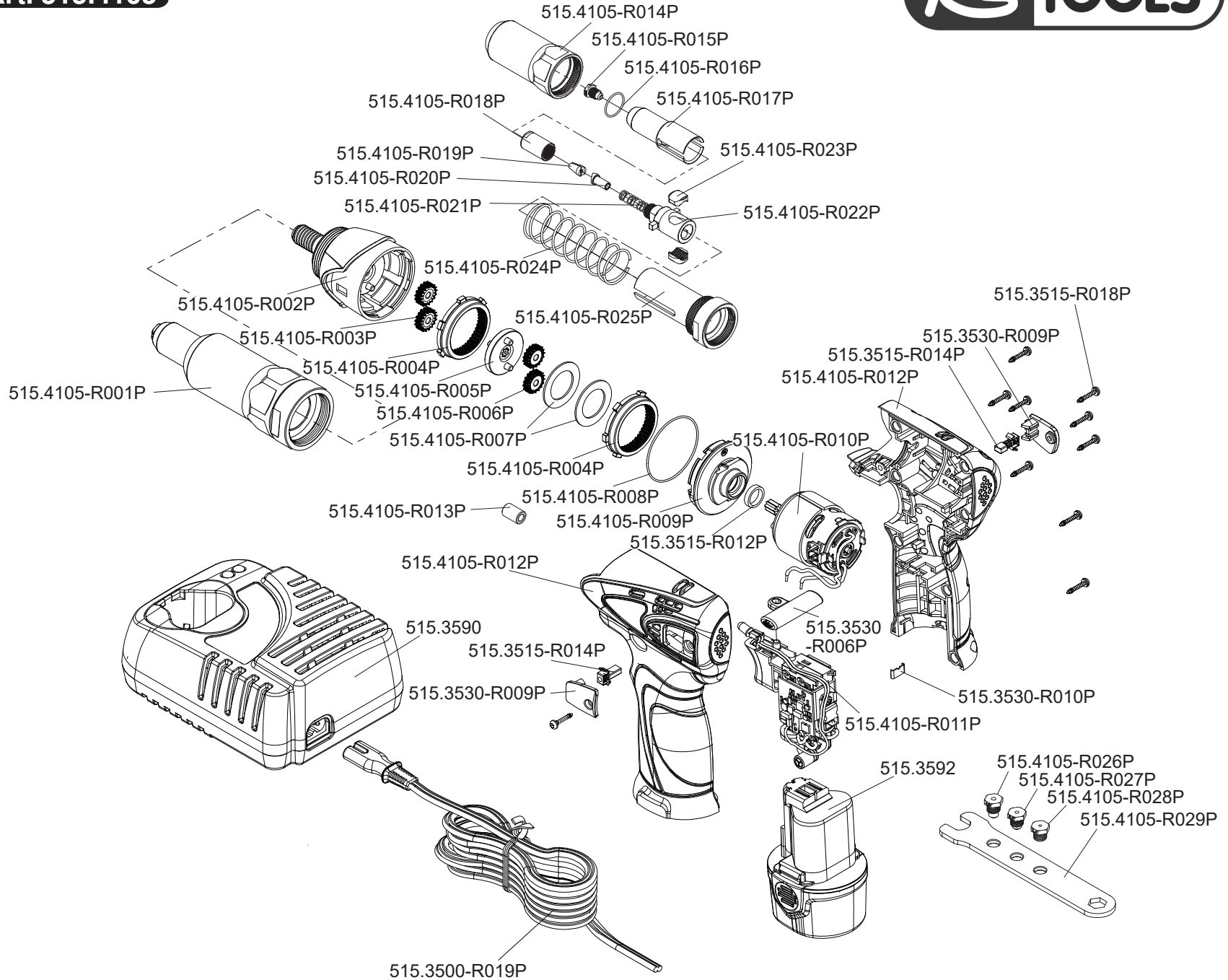


Art. 515.4105



Art. 515.4105

Art.-Nr.	Description	Beschreibung	Menge Qty.
515.3500-R019P	Power cord	Stromkabel	1
515.3515-R012P	Rubber washer	Gummi Unterlegscheibe	1
515.3515-R014P	Carbon brush	Kohlebürste	2
515.3515-R018P	Housing screw	Gehäuseschraube	10
515.3530-R006P	Reverser rod	Umschalthebel	1
515.3530-R009P	Carbon brush cover	Abdeckung für Kohlebürste	2
515.3530-R010P	Housing fixture	Gehäuseklammer	1
515.4105-R001P	Riveter adapter	Nietaufsatz	1
515.4105-R002P	Front housing	Gehäusefront	1
515.4105-R003P	Planet gear	Planetengetrieberad	2
515.4105-R004P	Gear ring	Getriebering	2
515.4105-R005P	Planet gear base	Grundplatte für Planetengetriebe	1
515.4105-R006P	Planet gear	Planetengetrieberad	2
515.4105-R007P	Washer	Unterlegscheibe	2
515.4105-R008P	O-Ring	O-Ring	1
515.4105-R009P	Motor bracket	Motorhalterung	1
515.4105-R010P	Electric motor	Elektromotor	1
515.4105-R011P	Main switch with PCB	Hauptschalter und Platine	1

Art.-Nr.	Description	Beschreibung	Menge Qty.
515.4105-R012P	Housing left + right	Gehäuse Links + Rechts	1
515.4105-R013P	Ferrite core	Ferritkern	1
515.4105-R014P	Exterior tube	Außenrohr	1
515.4105-R015P	Nosepiece Ø 4,8mm	Mundstück Ø 4,8mm	1
515.4105-R016P	O-Ring	O-Ring	1
515.4105-R017P	Rivethousing	Niethülse	1
515.4105-R018P	Jaw housing	Backengehäuse	1
515.4105-R019P	Jaw set	Klemmbackenset	1
515.4105-R020P	Wedge	Keilstift	1
515.4105-R021P	Coil spring	Spiralfeder	1
515.4105-R022P	Gear holder	Getriebehalter	1
515.4105-R023P	Gear	Getriebebacken	1
515.4105-R024P	Coil spring	Spiralfeder	1
515.4105-R025P	Guiding tube	Führungsrohr	1
515.4105-R026P	Nosepiece Ø 4,0mm	Mundstück Ø 4,0mm	1
515.4105-R027P	Nosepiece Ø 3,2mm	Mundstück Ø 3,2mm	1
515.4105-R028P	Nosepiece Ø 2,4mm	Mundstück Ø 2,4mm	1
515.4105-R029P	Nosepiece wrench	Mundstückschlüssel	1