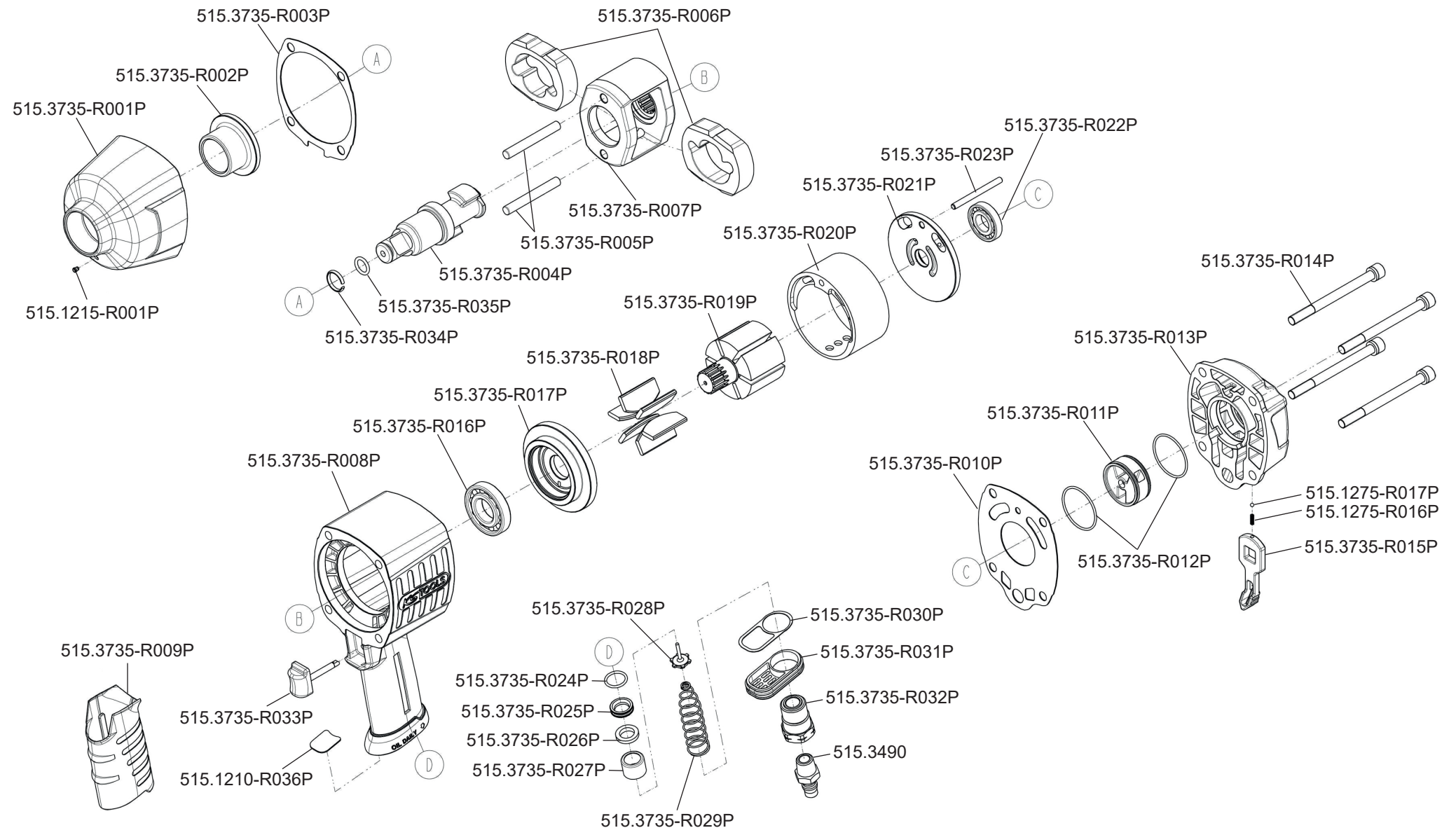


Art. 515.3735



Art. 515.3735

Art.-Nr.	Description	Beschreibung	Menge Qty.
515.1210-R036P	muffler	Abluftdämpfer	1
515.1215-R001P	hammer case grease fitting	Schmiernippel	1
515.1275-R016P	spring	Feder	1
515.1275-R017P	steel ball	Stahlkugel	1
515.3735-R001P	hammer case	Gehäuse	1
515.3735-R002P	hammer case bushing	Laufbuchse	1
515.3735-R003P	packing-hammer case	Dichtung	1
515.3735-R004P	anvil	Amboss	1
515.3735-R005P	hammer frame pin	Pin für Hammergehäuse	2
515.3735-R006P	hammer	Hammer	2
515.3735-R007P	hammer frame	Hammerrahmen	1
515.3735-R008P	housing	Gehäuse	1
515.3735-R009P	handle grip	Handgriff	1
515.3735-R010P	rear housing gasket	Hintere Gehäusedeckeldichtung	1
515.3735-R011P	reverse valve	Umschaltventil	1
515.3735-R012P	o - ring	O-Ring	2
515.3735-R013P	rear cover unit	Hinterer Gehäusedeckel	1
515.3735-R014P	bolt assy	Bolzen	4
515.3735-R015P	lever	Umschalthebel	1
515.3735-R016P	bearing	Kugellager	1

Art.-Nr.	Description	Beschreibung	Menge Qty.
515.3735-R017P	front bearing plate	Vordere Halterungsplatte	1
515.3735-R018P	blade	Rotorblatt	6
515.3735-R019P	rotor	Rotor	1
515.3735-R020P	cylinder	Zylinder	1
515.3735-R021P	rear end plate	Hintere Verschlussplatte	1
515.3735-R022P	bearing	Kugellager	1
515.3735-R023P	pin	Arretierungsstift	1
515.3735-R024P	o - ring	O-Ring	1
515.3735-R025P	insert bushing	Distanzhülse	1
515.3735-R026P	seal unit	Dichtungsring	1
515.3735-R027P	bushing	Hülse	1
515.3735-R028P	tip valve	Druckventil	1
515.3735-R029P	spring	Ventilfeder	1
515.3735-R030P	gasket	Dichtung	1
515.3735-R031P	deflector	Abluft-Ableiterplatte	1
515.3735-R032P	air inlet	Lufteinlass	1
515.3735-R033P	trigger unit	Auslöseschalter	1
515.3735-R034P	socket retainer	Stecknusshaltering	1
515.3735-R035P	o-ring	O-Ring	1
515.3490	Air inlet connector, male thread, 3/8"	Messing-Stecknippel m.Außengew.10x16mm	1