

Installation Manual

A-2737 ARNOTT REAR LEFT AIR SPRING BMW 5 SERIES WAGON (E39)



Congratulations on your purchase of an Arnott® air suspension product. We at Arnott Incorporated are proud to offer a high quality product at the industry's most competitive pricing. Thank you for your confidence in us and our product.

Proper installation is essential to experience and appreciate the benefits of this system. Please take a moment to review these installation instructions before you begin to install these components on your vehicle. The removal and installation of air suspension products should only be performed by a fully qualified, ASE Certified, professional.

It is equally important to be aware of all necessary safety measures while installing your new Air Suspension System. This includes proper lifting and immobilizing of the vehicle and isolation of any stored energy to prevent personal injury or property damage.

"Engineered to Ride, Built to Last®"



WARNING: *The air suspension system is under pressure (up to 10 bar, or 150 lbf/in). Verify pressure has been relieved and disconnect power to the air suspension system prior to disassembly. Do not allow dirt or grease to enter the system. Always wear standard hand, ear, and eye protection when servicing the air suspension system.*

Arnott® is committed to the quality of its products. If you have a question or problem with any Arnott product, please contact Arnott by calling 800-251-8993 during normal business hours or email techassistance@arnottinc.com. (In the EU please call +31 (0)73 7850 580 or email info@arnotteurope.com)

GENERAL INFORMATION:

Reading this manual signifies your agreement to the terms of the general release, waiver of liability, and hold harmless agreement, the full text of which is available at www.arnottinc.com.

- Not to be stored below 5°F (-15°C) or above 122°F (50°C).
- Avoid damage to air lines and cables.
- Removal and installation is only to be performed by fully qualified personnel.
- Use car manufacturer's diagnostic software.

CAUTION: *Damage to the vehicle and air suspension system can be incurred if work is carried out in a manner other than specified in the instructions or in a different sequence.*



To avoid the possibility of short circuits while working with electric components consult your owner's manual on how to disconnect your battery.



Consult your vehicle owner's manual, service manual, or car dealer for the correct jacking points on your vehicle and for additional care, safety and maintenance instructions. Under no circumstances should any work be completed underneath the vehicle if it is not adequately supported, as serious injuries and death can occur.

REAR AIR SPRING REMOVAL

1. LIFT VEHICLE AND REMOVE REAR WHEEL. (FIGURE 1)



FIGURE 1

2. LIFT THE REAR HATCH TO ACCESS THE REAR CARGO AREA.

3. REMOVE THE TIE-DOWN ANCHORS. LIFT AND REMOVE THE FLOOR TO ACCESS THE TOP OF THE AIR SPRINGS. (FIGURES 2, 3, 4)



FIGURE 2



FIGURE 3



FIGURE 4

4. CAREFULLY LOOSEN AND REMOVE THE AIR LINE TO DEFLATE THE REAR AIR SPRING. (FIGURES 5, 6)



FIGURE 5



FIGURE 6

5. REMOVE THE LARGER AIR LINE CLIP FROM THE AIR FITTING AND DISCARD. PULL UP ON THE AIR LINE FITTING TO DISCONNECT IT FROM THE TOP OF THE AIR SPRING. (FIGURES 7, 8)



FIGURE 7



FIGURE 8

6. REMOVE THE TWO (2) TOP MOUNT RETAINING CLIPS AND DISCARD. (FIGURE 9)



FIGURE 9

7. REMOVE THE BOTTOM PISTON RETAINING BOLT. (FIGURE 10)



FIGURE 10

8. REMOVE THE AIR SPRING FROM THE VEHICLE. (FIGURE 11)



FIGURE 11

REAR AIR SPRING INSTALLATION



Tighten all nuts and bolts to manufacturer's specifications during the installation process.

1. INSTALL THE REAR AIR SPRING INTO THE VEHICLE IN REVERSE ORDER OF AIR SPRING REMOVAL USING THE HARDWARE PROVIDED.
2. CHECK FOR PROPER ORIENTATION OF THE AIR LINE RETENTION CLIP, MAKING SURE THE TAPERED EDGE IS FACING DOWNWARD, TOWARD THE SPRING, AND IS FULLY SEATED. (FIGURES 12, 13)

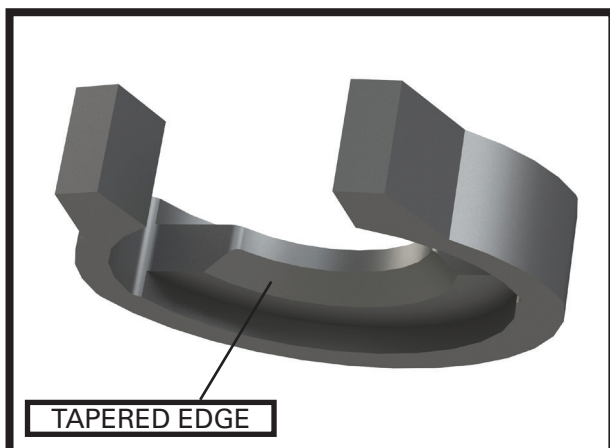


FIGURE 12

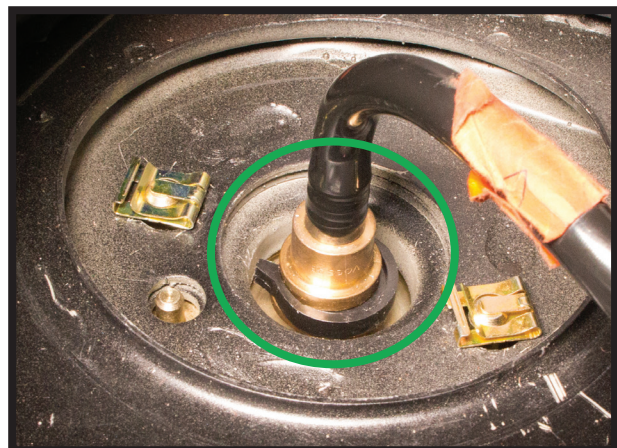


FIGURE 13