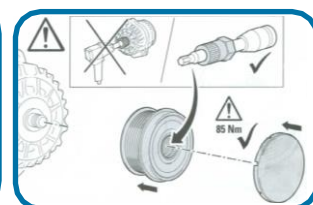
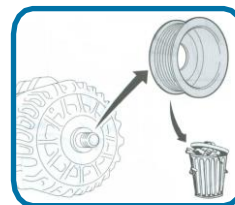
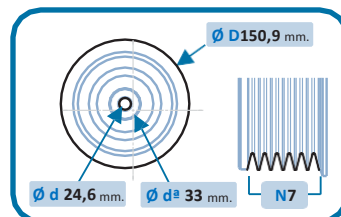
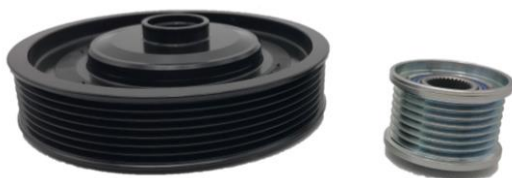


TECHNICAL INFORMATION / INFORMACIÓN TÉCNICA INFORMATIONS TECHNIQUES / INFORMAÇÃO TÉCNICA

17-1031KIT



ANTI-VIBRATION KIT composed of crankshaft pulley

Ref. **17-1031** and alternator pulley Ref. **30-1004**

OEM → NISSAN: 1230300QBD / 12303AW300

RENAULT: 8200268426 / 8200297936 / 8200457775 /
8200523072

Assembly instruction:

This Crankshaft Pulley has been designed to work with the Overrunning Alternator Pulley Ref. 30-1004.

Failure to assemble the complete KIT will invalidate the warranty of your IJS GROUP product.

Tighten the torque to 130 NM and tighten the screw 180°.

When changing the pulley, respect the direction, change the belts and adjust them to the correct tension.

ES

Instrucciones de montaje:

Esta polea del cigüeñal ha sido diseñada para funcionar con la polea libre del alternador Ref. 30-1004.

No montar el KIT completo invalidará la garantía de su producto IJS GROUP.

Apriete el par a 130 NM y apriete el tornillo 180°.

Al cambiar la polea respetar la dirección, cambiar las correas y ajustarlas a la tensión correcta.

FR

Instructions de montage:

Cette poulie de vilebrequin a été conçue pour fonctionner avec la poulie d'alternateur à roue libre Réf. 30-1004.

Le fait de ne pas assembler le KIT complet annulera la garantie de votre produit IJS GROUP.

Serrez le couple à 130 NM et serrez la vis à 180°.

Lors du changement de poulie, respectez le sens, changez les courroies et réglez-les à la bonne tension.

PT

Instrução de montagem:

Esta polia do virabrequim foi projetada para funcionar com a polia do alternador de ultrapassagem ref. 30-1004.

A não montagem do KIT completo invalidará a garantia do seu produto do GRUPO IJS.

Aperte o torque a 130 NM e aperte o parafuso 180°.

Ao trocar a polia, respeite a direção, troque as correias e ajuste-as na tensão correta.



Vehicle linkage 17-1031KIT

Aplicación vehículoy 17-1031KIT

Affectation véhicule 17-1031KIT

Vinculação do veículo 17-1031KIT



C.V.



NISSAN

PRIMERA (P12)	1.9 dCi	120	F9Q	04.2003 - 10.2007
PRIMERA Hatchback (P12)	1.9 dCi	120	F9Q	04.2003 - 10.2007
PRIMERA Ranchera familiar (WP12)	1.9 dCi	120	F9Q	04.2003 -

RENAULT

SCÉNIC III (JZ0/1_)	1.9 dCi (JZ0J, JZ1J, JZ1K, JZ1S)	131	F9Q 870, F9Q 872	02.2009 -
SCÉNIC II (JM0/1_)	1.9 dCi (JM14)	131	F9Q 804, F9Q 816, F9Q 818, F9Q J 803	05.2005 - 11.2008
SCÉNIC II (JM0/1_)	1.9 dCi (JM0G, JM12, JM1G, JM2C)	120	F9Q 812	06.2003 - 05.2006
MEGANE III Grandtour (KZ0/1)	1.9 dCi (KZ0J, KZ0N, KZ1S)	131	F9Q 870, F9Q 872	05.2009 -
MEGANE III Fastback (BZ0/1_ B3_)	1.9 dCi (BZ0N, BZ0J)	131	F9Q 870, F9Q 872	11.2008 -
MEGANE III Coupé (DZ0/1_)	1.9 dCi (DZ0N, DZ0J, DZ1J, DZ1K)	131	F9Q 870, F9Q 872	11.2008 - 08.2015
MEGANE II Sedán (LM0/1_)	1.9 dCi (LMOG, LM1G, LM2C)	120	F9Q 800	09.2003 -
MEGANE II Ranchera familiar (KM0/1_)	1.9 dCi (KMRG, KM1G, KM0G, KM2C)	120	F9Q 800	08.2003 - 07.2009
MEGANE II (BM0/1_ CM0/1_)	1.9 dCi (BMOG, CMOG)	120	F9Q 800	11.2002 - 02.2008
LAGUNA II Grandtour (KG0/1_)	1.9 dCi (KG1V)	130	F9Q 758, F9Q 759	05.2005 - 12.2007
LAGUNA II Grandtour (KG0/1_)	1.9 dCi (KG0G)	120	F9Q 674	03.2001 - 09.2007
LAGUNA II Grandtour (KG0/1_)	1.9 dCi (KG05)	92	F9Q 664	03.2004 - 05.2005
LAGUNA II (BG0/1_)	1.9 dCi (BG1A, BG1V)	130	F9Q 758, F9Q 759	05.2005 - 08.2007
LAGUNA II (BG0/1_)	1.9 dCi (BG08, BG0G)	120	F9Q 674	03.2001 - 09.2007
LAGUNA II (BG0/1_)	1.9 dCi (BG05)	92	F9Q 664	03.2004 - 05.2005
GRAND SCÉNIC II (JM0/1_)	1.9 dCi (JM14)	131	F9Q 816, F9Q 818, F9Q EE 804, F9Q J 803	04.2004 - 02.2008
GRAND SCÉNIC II (JM0/1_)	1.9 dCi (JM0G, JM12, JM1G, JM2C)	120	F9Q 812	04.2004 - 05.2006



Sistema de Gestión
ISO 9001:2015
www.ijsgroup.com
ID 3106950863

